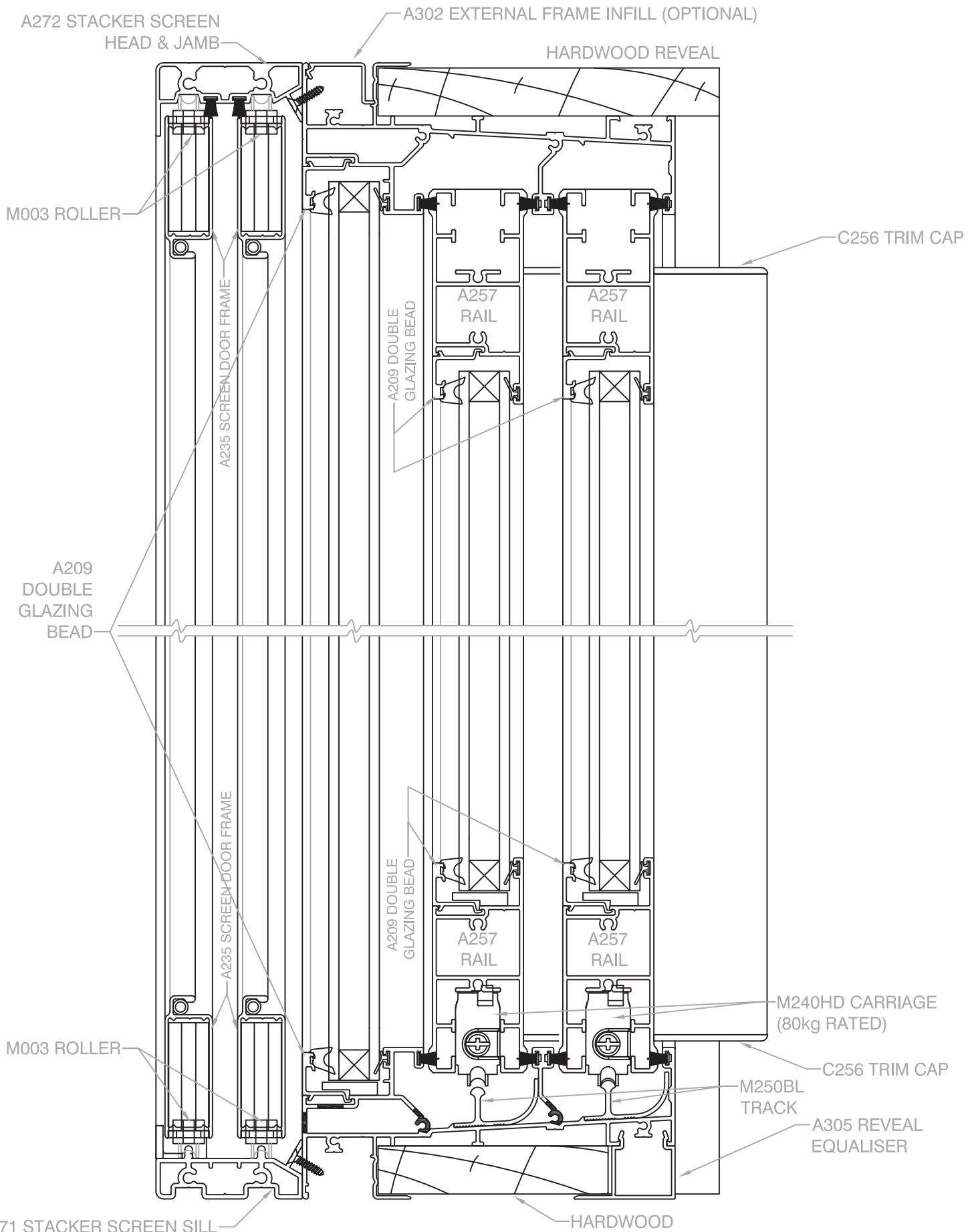


# STACKER DOOR, 3 & 6 PANEL



**AA SERIES - 150mm FRAME** (205mm total depth with optional fly screen)



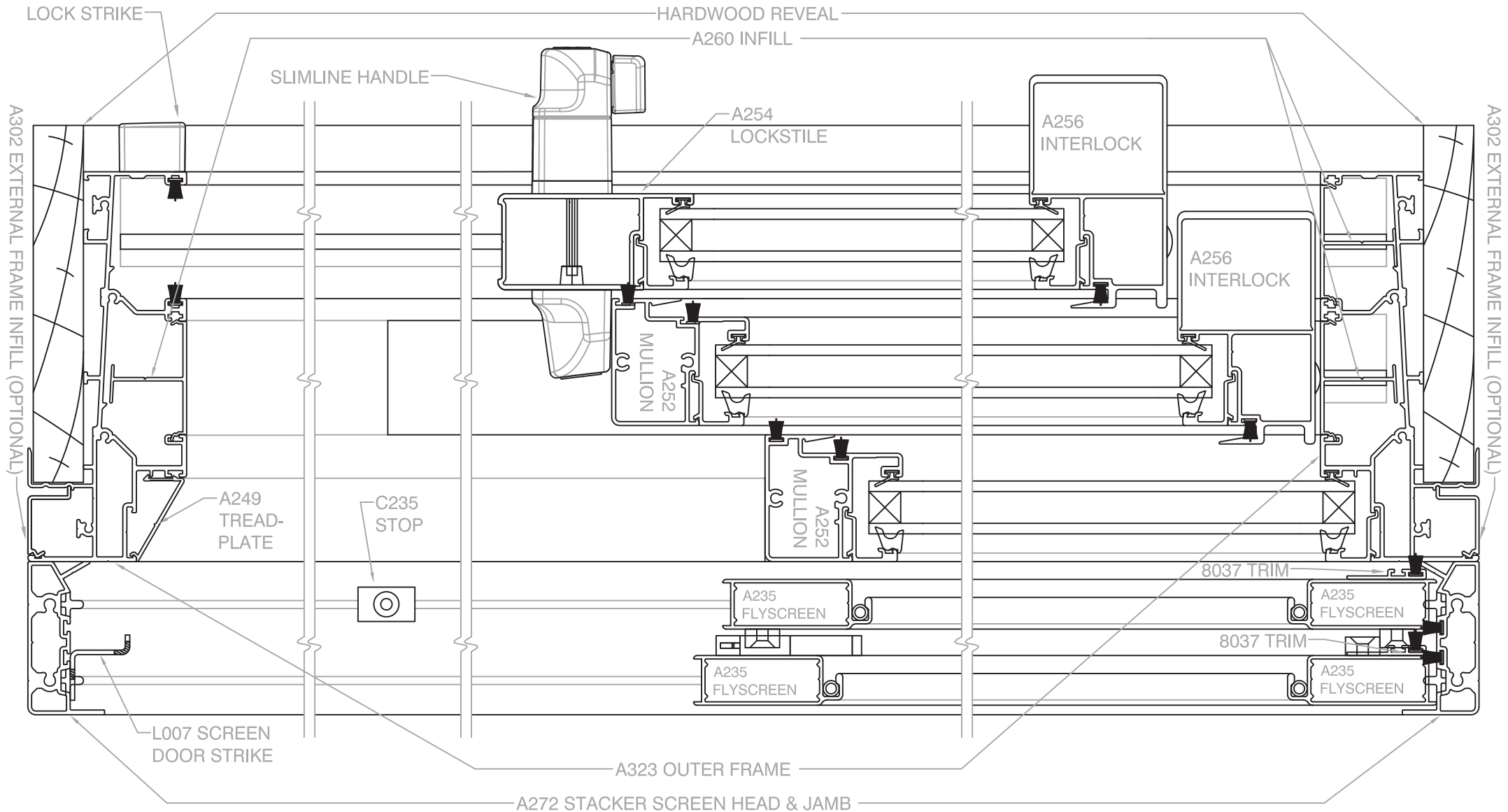
**Scale 1 : 2 @ A4, Vertical Cross Section, shown with optional stacking fly screen**

The intellectual property on this drawing including rights in respect of copyright & patents are owned by Rylock Pty. Ltd. All rights reserved. This drawing expires 31 December, 2018 or earlier. Visit [www.rylock.com](http://www.rylock.com) for most current version

# STACKER DOOR, 3 & 6 PANEL



**AA SERIES - 150mm FRAME** (205mm total depth with optional stacking fly screen)



**Scale 1 : 2 @ A4, Horizontal Cross Section of 3-Panel Stacker Door, shown with optional stacking fly screen**

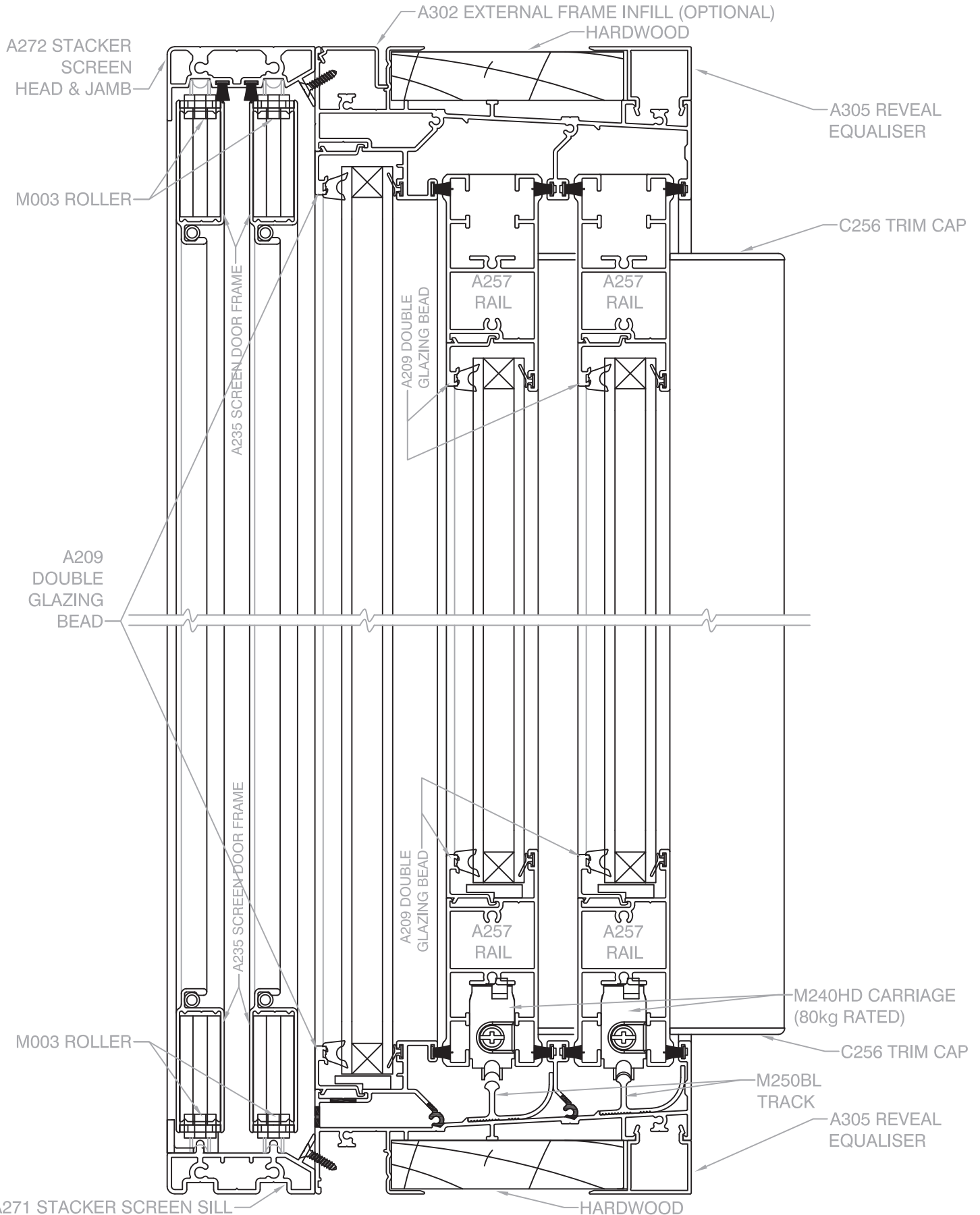
The intellectual property on this drawing including rights in respect of copyright & patents are owned by Rylock Pty. Ltd. All rights reserved. This drawing expires 31 December, 2018 or earlier. Visit [www.rylock.com](http://www.rylock.com) for most current version

# STACKER DOOR, 3 & 6 PANEL



(with Reveal Equaliser)

**AA SERIES - 150mm FRAME** (205mm total depth with optional fly screen)



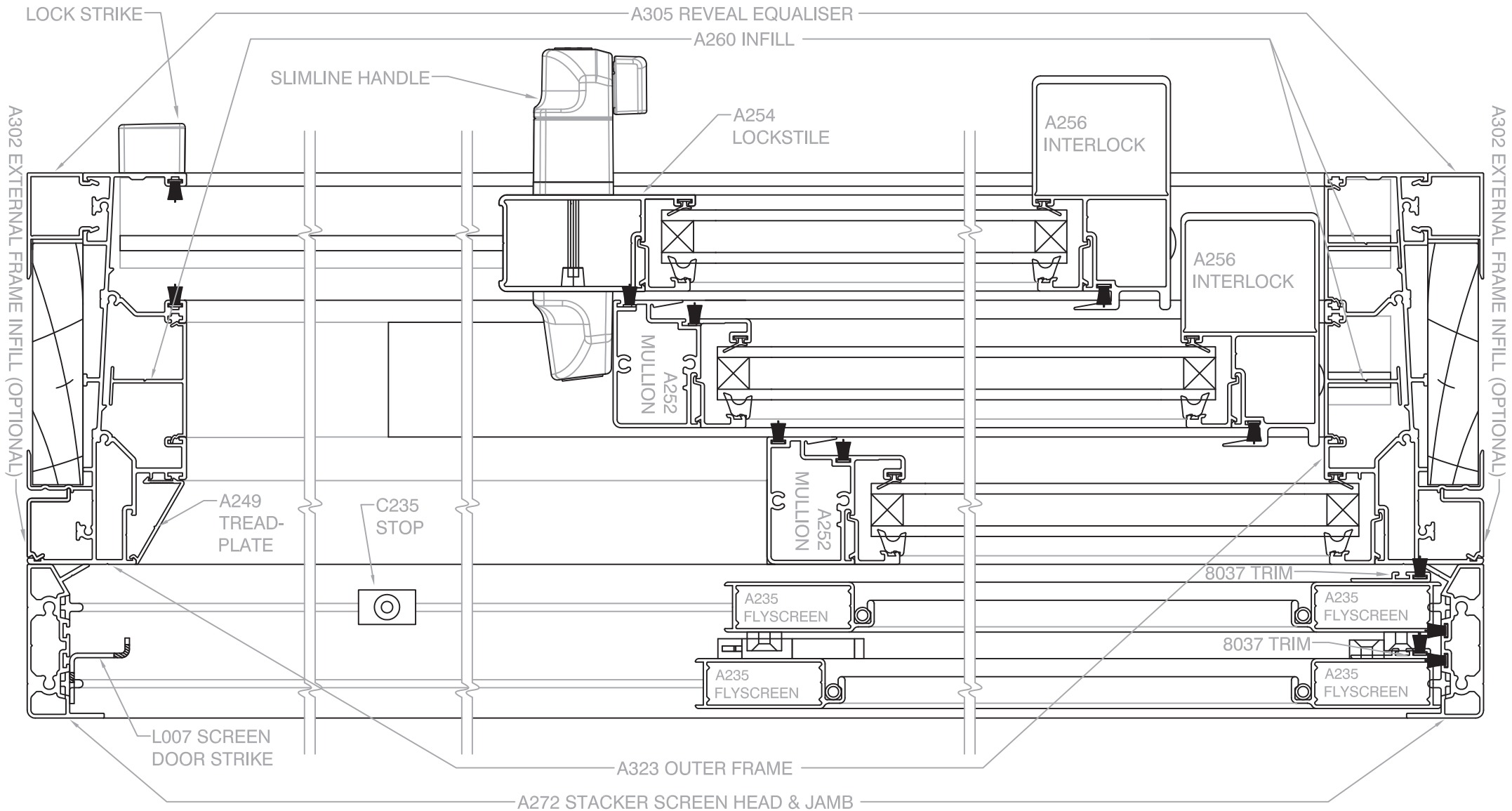
**Scale 1 : 2 @ A4, Vertical Cross Section, shown w. Reveal Equaliser & opt. fly screen**

The intellectual property on this drawing including rights in respect of copyright & patents are owned by Rylock Pty. Ltd. All rights reserved. This drawing expires 31 December, 2018 or earlier. Visit [www.rylock.com](http://www.rylock.com) for most current version

# STACKER DOOR, 3 & 6 PANEL (w. Reveal Equaliser)



**AA SERIES - 150mm FRAME** (205mm total depth with optional fly screen)



**Scale 1 : 2 @ A4, Horizontal Cross Section of 3-Panel Stacker Door, shown with Reveal Equaliser & optional fly screen**

The intellectual property on this drawing including rights in respect of copyright & patents are owned by Rylock Pty. Ltd. All rights reserved. This drawing expires 31 December, 2018 or earlier. Visit [www.rylock.com](http://www.rylock.com) for most current version