

# FIXED LITE WINDOW

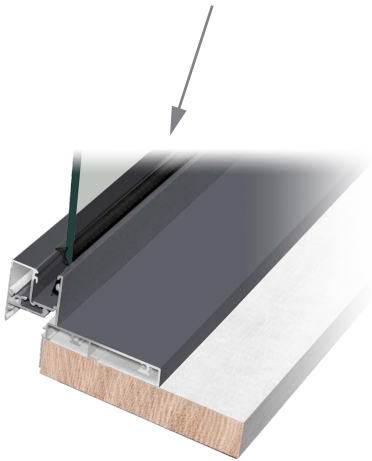
## 100 SERIES



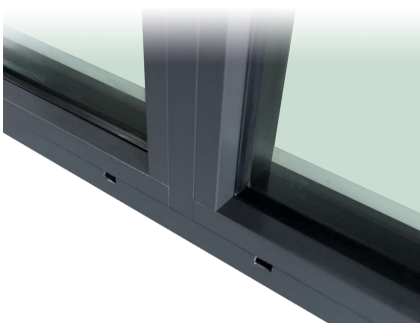
A wide selection of high performance single glazing can be specified within the 100 Series. These include body tints (coloured), low emissivity coatings (low E) & a range of laminated glass up to 6.76mm in thickness

Mitred corners enhance the window's clean appearance. All fixings are made from durable stainless steel

All glass is installed into dual vinyl sided rebates, ensuring vibration free glazing. A co-extruded santoprene inner seal resists shrinkage & assists with weatherproofing



Optional hardwood reveals suit architaved finishes

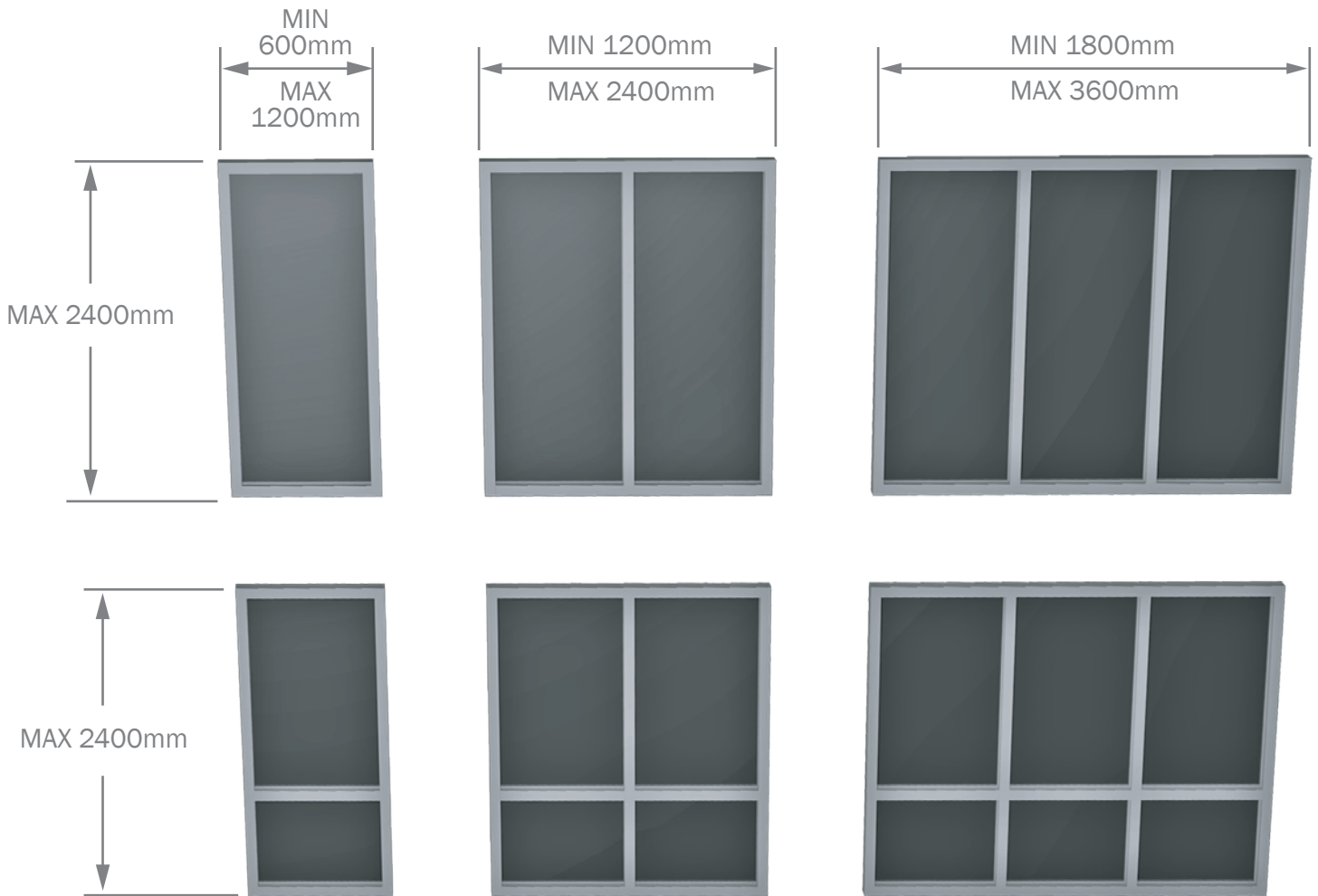


Fixed Lite windows are based around a nominal 100mm aluminium frame depth, & are available with 3 options to suit different installation methodologies. Fixing fins are specific to the SA market, whilst optional hardwood reveals are ideal for an architaved internal finish in any location. Aimed at double-brick construction - common in NSW - custom brick brackets allow the frames to be easily installed into pre-prepared masonry openings. Ask your Rylock Sales Consultant how each of these options affect stud or masonry openings for your individual project

# FIXED LITE WINDOW



## 100 SERIES



**NOTE:** ALL SIZES ARE TYPICAL RATHER THAN DEFINITIVE. FOR SIZES OUTSIDE OF THESE (incl. raked windows) PLEASE DISCUSS WITH YOUR RYLOCK SALES CONSULTANT

### Sizing

Window style & opening detail should be considered as viewed externally  
Sizes indicated are the aluminium frame size. Optional reveals are outboard of aluminium frame dimension  
For Stud openings without reveals, add 20mm to both height & width. With optional reveals, add 60mm to both height & width

### Glazing

Glazing strength to minimum N3 rating, maximum glass thickness is 6.76mm (laminated)

### Certification

Certified performance data including WERS ratings are available for this product on request

### Specify

Frame colour, configuration, height, width & overall depth (depth varies with optional reveals only)  
Optional: hardwood reveals or brick brackets, external frame infill, sill flap, glass type

The above product sizes comply with structural requirements (AS2047-2014, *Windows and external glazed doors in buildings*) for an 'N1' wind rating (AS4055-2012, *Wind loads for housing*).

This is typical of sites in suburban areas. In addition, the location has a Terrain Category of 3, is Topographic Class 1 or 2 and assumes the building will be surrounded by others of similar size.

Please specify if your site has different characteristics to any of those listed. Your building professional (architect, designer, surveyor, engineer, builder, etc.) can often assist with such determinations.